

BENCHMARK—RR.SP.K. THRU ALUMINUM TAG STAMPED "SLRC 10 1993" IN THE WEST SIDE OF UTILITY POLE #495/342. ELEV.=946.79

10" C.M.P. I.E.=946.45
10" C.M.P. I.E.=945.90

12" C.M.P. I.E.=UNKNOWN
12" C.M.P. I.E.=957.81

CP110

CP110

DRIVE

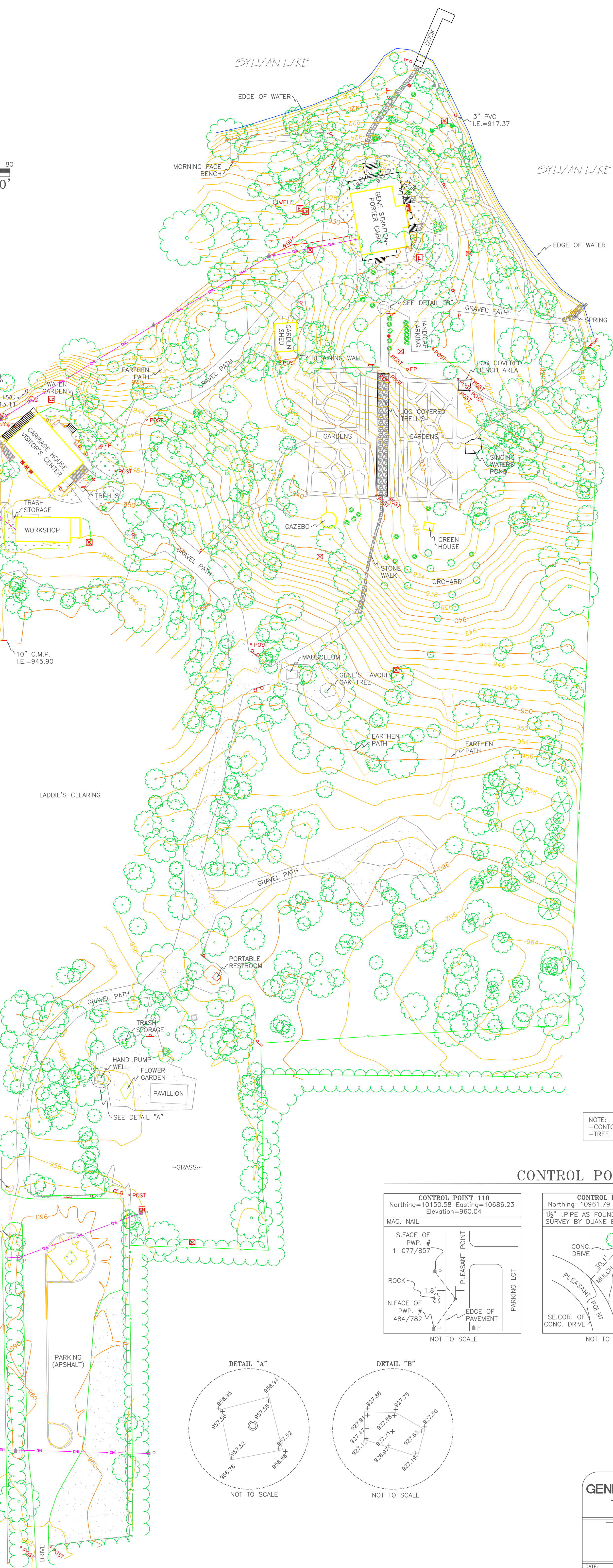
10" C.M.P. I.E.=946.45

10" C.M.P. I.E.=945.90

12" C.M.P. I.E.=UNKNOWN

12" C.M.P. I.E.=957.81

CP110



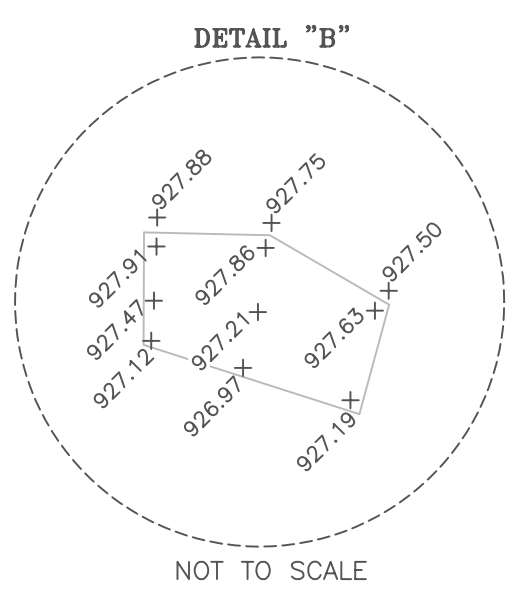
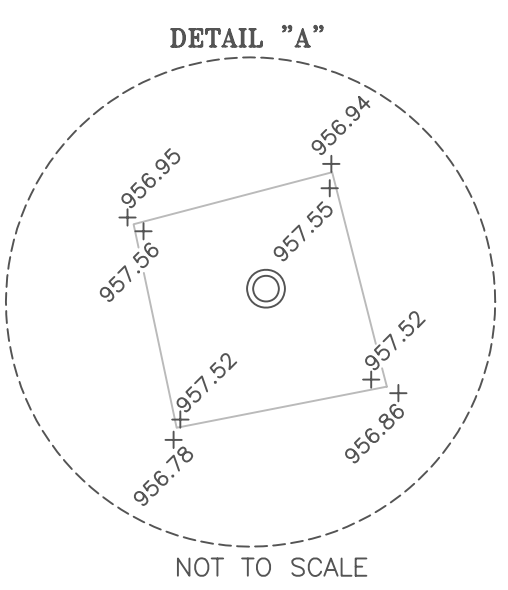
LEGEND

- SPOT ELEVATION
- GAS METER
- POWER POLE W/ LIGHT
- DOUBLE POST SIGN
- SINGLE POST SIGN
- FLAG POLE
- LIFT STATION
- SANITARY MANHOLE
- GUY ANCHOR
- POWER POLE
- POST
- WATER VALVE
- WATER FOUNTAIN
- BIRD FEEDER
- BIRD HOUSE
- ELECTRIC RISER
- WELL
- MANHOLE
- ELECTRIC PUMP
- AIR CONDITIONING
- GROUND LIGHT
- DECIDUOUS TREE
- CONIFEROUS TREE
- SHRUB
- STUMP
- OVERHEAD LINE
- FARM FENCE
- SPLIT-RAIL FENCE
- ELECTRIC LINE
- EXISTING GRADE CONTOURS
- TREE LINE
- GRAVEL
- STONE
- BRICK
- LANDSCAPING

NOTE:
-CONTOURS ARE ACCURATE TO ONE-HALF THE CONTOUR INTERVAL.
-TREE LOCATION ACCURATE TO ONE-HALF THE TREE DIAMETER.

CONTROL POINT DETAILS

<p>CONTROL POINT 110 Northing=10150.58 Easting=10686.23 Elevation=960.04</p> <p>MAG. NAIL</p> <p>S.FACE OF PWP. # 1-077/857</p> <p>ROCK</p> <p>N.FACE OF PWP. # 484/782</p> <p>PLEASANT POINT</p> <p>EDGE OF PAVEMENT</p> <p>PARKING LOT</p> <p>NOT TO SCALE</p>	<p>CONTROL POINT 111 Northing=10961.79 Easting=10702.93</p> <p>1 1/2" I.P.I.P.E. AS FOUND IN A PLAT OF SURVEY BY DUANE BROWN.</p> <p>CONC. DRIVE</p> <p>PLEASANT POINT</p> <p>MULCH</p> <p>NW.COR. OF FOUNDATION</p> <p>SE.COR. OF CONC. DRIVE</p> <p>WEST FACE OF PWP. # 495/342</p> <p>NOT TO SCALE</p>	<p>CONTROL POINT 112 Northing=9038.70 Easting=10706.95</p> <p>I.ROD W/ CAP AS FOUND IN A PLAT OF SURVEY BY DUANE BROWN.</p> <p>PLEASANT POINT</p> <p>SW.FACE OF PWP. # 484/775</p> <p>850 N.</p> <p>TELEPHONE PEDESTAL</p> <p>NOT TO SCALE</p>
---	--	---



GENE STRATTON PORTER HISTORICAL SITE TOPOGRAPHIC DATA COLLECTION

TERRITORIAL ENGINEERING, LLC

WALKERTON INDIANA

DATE: 4-27-06 JOB # 06-126 FILE: ENGINEERING SHEET: 1 of 1